

PRODUCT INFORMATION PACKET

marathon[®]
Motors

Model No: 180MTFC6511

Catalog No: R342A

30 HP General Purpose, 3 phase, 3600 RPM, 230/460 V, 180M Frame, TEFC
Cast Iron TEFC Motors



Regal and Marathon are trademarks of Regal Beloit Corporation or one of its affiliated companies.
©2020 Regal Beloit Corporation, All Rights Reserved. MC017097E

REGAL

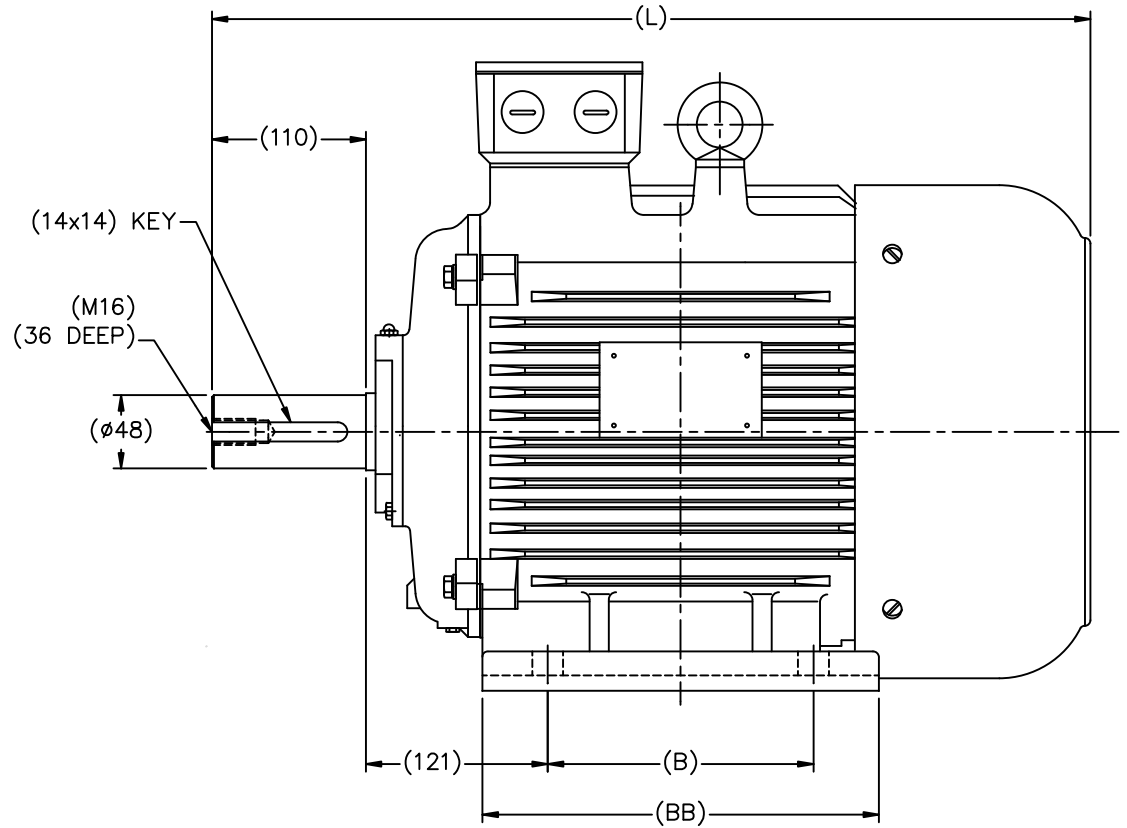
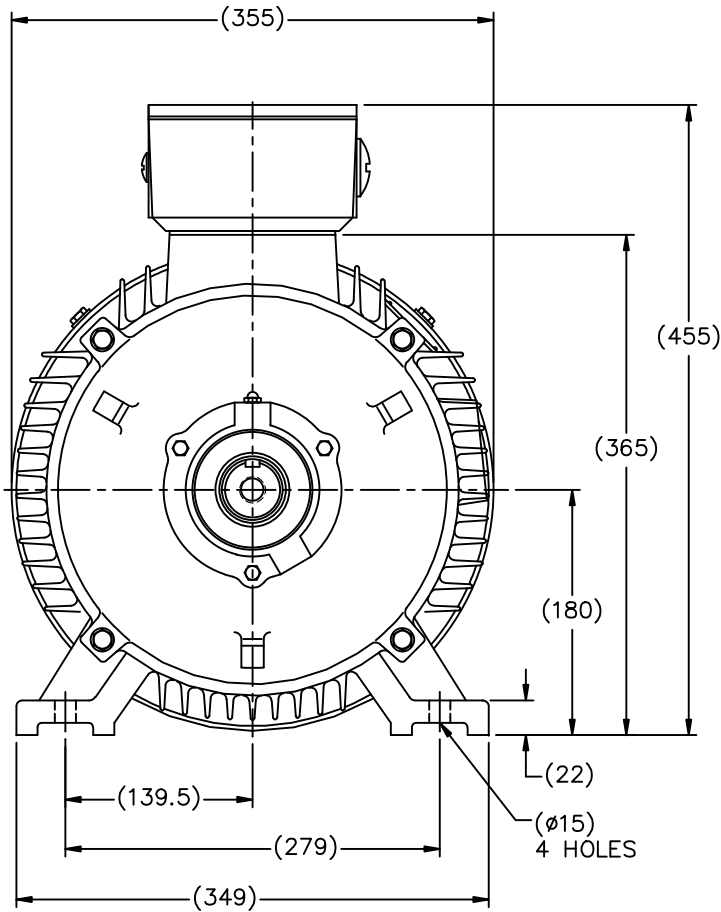
Nameplate Specifications

Output HP	30 Hp	Output KW	22.4 kW
Frequency	60 Hz	Voltage	230/460 V
Current	69.0/34.5 A	Speed	3550 rpm
Service Factor	1.15	Phase	3
Efficiency	93 %	Power Factor	87
Duty	Continuous	Insulation Class	F
Design Code	B	KVA Code	G
Frame	180M	Enclosure	Totally Enclosed Fan Cooled
Thermal Protection	No	Ambient Temperature	40 °C
Drive End Bearing Size	6211	Opp Drive End Bearing Size	6211
UL	No	CSA	Y
CE	Y	IP Code	54

Technical Specifications

Electrical Type	Squirrel Cage Inverter Rated	Starting Method	Part Wdg Start & Wye Start Delta Run Or Inverter
Poles	2	Rotation	Reversible
Resistance Main	.244 Ohms	Mounting	Rigid Base
Motor Orientation	Horizontal	Drive End Bearing	Ball
Opp Drive End Bearing	Ball	Frame Material	Cast Iron
Shaft Type	IEC	Overall Length	26.77 in
Shaft Diameter	1.888 in	Shaft Extension	4.33 in
Assembly/Box Mounting	F3		
Connection Drawing	004172.03	Outline Drawing	SS622257

This is an uncontrolled document once printed or downloaded and is subject to change without notice. Date Created:19/10/2020



(MAY NOT BE DRAWN TO SCALE)

(DIMENSIONS ARE IN MILLIMETERS)

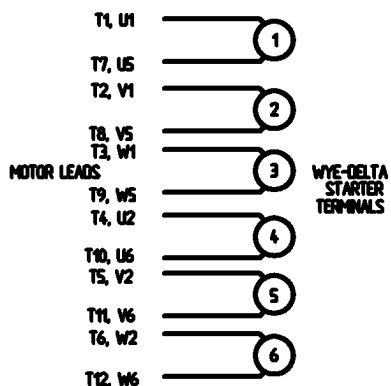
Cat.No	FRAME	B	BB	L
193324.60 193322.60	DF180M	241	311	680
193325.60 193320.60	DF180L	279	349	718

NO.		REVISION	BY & DATE	CHK	ANG	FINISH	PREV
THIS DRAWING IN DESIGN AND DETAIL IS OUR PROPERTY AND MUST NOT BE USED EXCEPT IN CONNECTION WITH OUR WORK. ALL RIGHTS OF DESIGN AND INVENTION ARE RESERVED. THIS IS AN ELECTRONICALLY GENERATED DOCUMENT - DO NOT SCALE THIS PRINT				RFP	12-22-2010	CAD FILE SS622257	
				DIST			

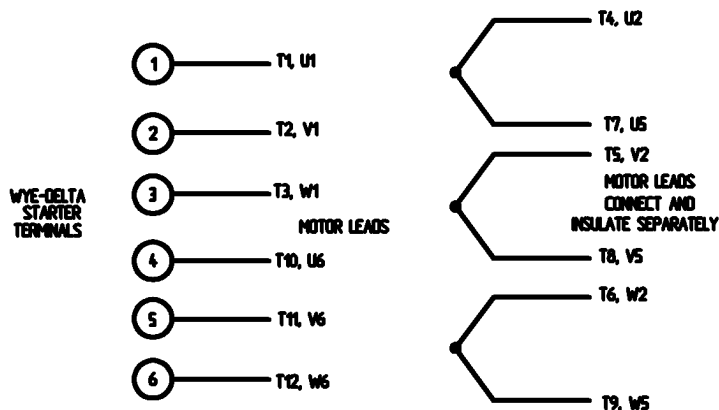
TOLERANCES UNLESS SPECIFIED			DRAWN HLB 12-06-2010
DEC.	METRIC		CHK DJK 12-17-2010
.X	±2.5		APPD SB 12-13-2010
.XX	±.76		SCALE 1=18
.XXX	±.127		REF
.XXXX	±.0127	MAT'L	FMF HEBE1

WYE - DELTA STARTING USEABLE ON 2,4 AND 6 POLE MOTORS.

LOW VOLTAGE CONNECTION

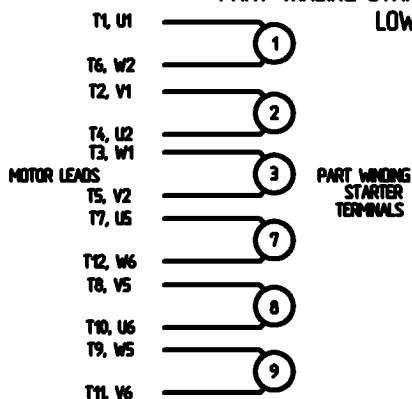


HIGH VOLTAGE CONNECTION



REFER TO THE WYE-DELTA STARTER CONNECTION INSTRUCTIONS FOR PROPER CONNECTION OF POWER LINES TO STARTER.

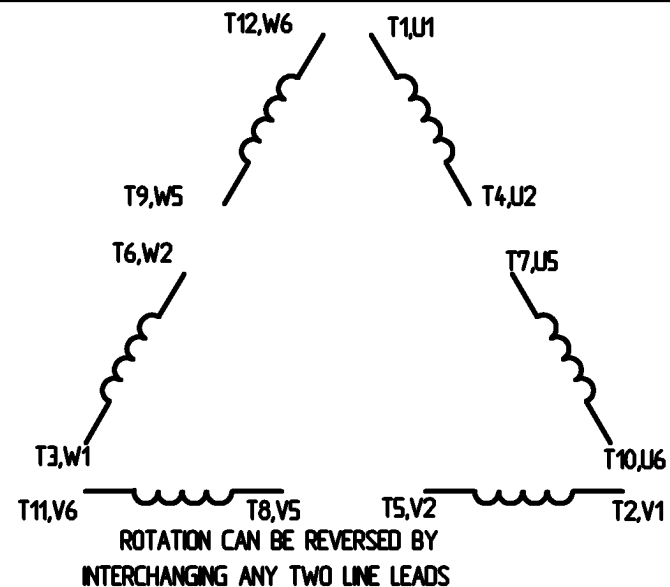
PART WINDING START USABLE ON 4 & 6 POLE MOTORS
LOW VOLTAGE CONNECTION ONLY



REFER TO THE PART WINDING STARTER INSTRUCTIONS FOR PROPER CONNECTION OF POWER LINES TO STARTER.

REFER TO THE CUTLER - HAMMER OR EQUIV. FOR PROPER SELECTION OF OVERLOAD HEATER COILS.

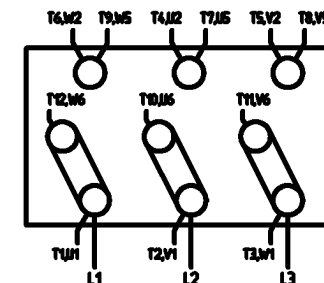
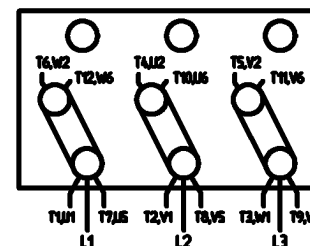
LINE LEADS



12 LEAD DELTA CONNECTION ACROSS THE LINE START
(FOR Y START DELTA RUN, REMOVE THE JUMPERS)

LOW VOLTAGE
MUST BE REWIRED
AS SHOWN

HIGH VOLTAGE
FACTORY WIRED FOR HIGH
VOLTAGE AS SHOWN



				TOLERANCES UNLESS SPECIFIED		LEESON ELECTRIC MOTORS GEARMOTORS AND DRIVES	DRAWN	CW 08/28/02	
				DEC.	INCHES		CHK		
				X	+ .1	APPO			
				XX	+ .01	SCALE	1:1		
				XXX	+ .005	REF			
				XXXX	+ .0005	FINISH			
NO.	REVISION	BY & DATE	CHK	ANG	+ 1/2°		PREV		
THIS DRAWING IN DESIGN AND DETAIL IS OUR PROPERTY AND MUST NOT BE USED EXCEPT IN CONNECTION WITH OUR WORK. ALL RIGHTS OF DESIGN AND INVENTION ARE RESERVED. THIS IS AN ELECTRONICALLY GENERATED DOCUMENT - DO NOT SCALE THIS PRINT.				RFP	CAD FILE	00417203	SIZE	DRAWING NO.	REV.
				DST			A	004172-03	

```
ERROR: syntaxerror  
OFFENDING COMMAND: --nostringval--
```

```
STACK:
```

```
/CB  
-dictionary-  
/Pscript_WinNT_Compact  
-dictionary-
```


Customer:
Attention:

FAREEDA DUDEKULA



Submittal
Data @ 460 V

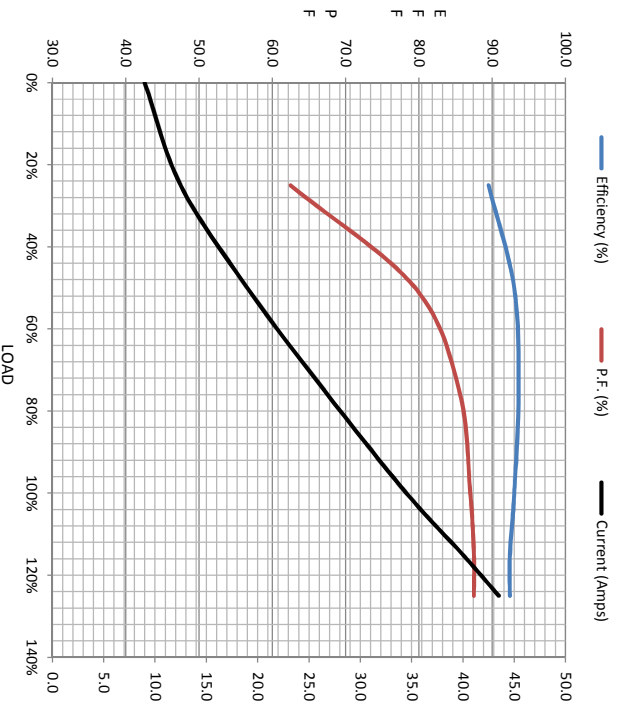
Load	Motor Load Data							
	0%	25%	50%	75%	100%	115%	125%	LR
Current (Amps)	9.0	12.5	19.0	26.5	34.5	40.0	43.5	211
Torque (ft-lb)	0.00	11.0	22.0	33.2	44.5	51.2	55.5	89.5
RPM	3600	3585	3575	3565	3550	3540	3530	0
Efficiency (%)		89.5	93.0	93.6	93.0	92.4	92.4	
P.F. (%)	7.5	62.5	79.5	85.5	87.0	87.5	87.5	39.0

Motor Speed Data

	LR	Pull-Up	BD	Rated	Idle
Speed (rpm)	0	1000	3355	3550	3600
Current (Amps)	211	200	121	34.5	9.0
Torque (ft-lb)	89.5	72.0	119	44.5	0.00

Information Block

HP	30.0
Sync. RPM	3600
Frame	180
Enclosure	TEFC
Construction	TFC
Voltage	30/460#200/40 V
Frequency	60 Hz
Design	B
LR Code letter	G
Service Factor	1.15
Temp Rise @ FL	60 °C
Duty	CONT
Ambient	40 °C
Elevation	1,000 feet
Rotor/Shaft wkt	0.00 Lb-Fe
Rel Wdg	TI4502020 NONE
Sound Pressure @ 1M	64 dBA
VFD Rating	CONSTANT 2:1
Outline Dwg	SS622287
Conn. Diag	004172.03
Additional Specifications:	
0	
EQUIV CKT (OHMS / PHASE)	
R1	R2
0.00000	0.00000
X1	X2
0.00000	0.00000
Xm	
0.00000	



Speed - Torque Curve

